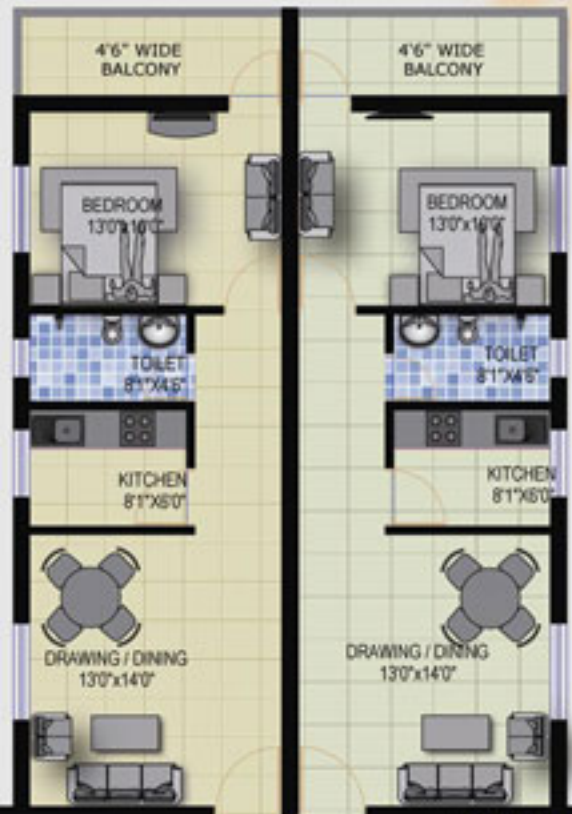






01,301,401 102,202,302,402  
 6'-0" WIDE CORRIDOR  
 07,307,407 106,206,306,406



103,203,303,403 104,204,304,404  
 6'-0" WIDE CORRIDOR  
 105,205,305,405



Typical  
 W  
 Area S

**Flat No.**

IRIS101,201,301,401
IRIS102,202,302,402
IRIS103,203,303,403
IRIS104,204,304,404
IRIS105,205,305,405
IRIS106,206,306,406
IRIS107,207,307,407

• Structure

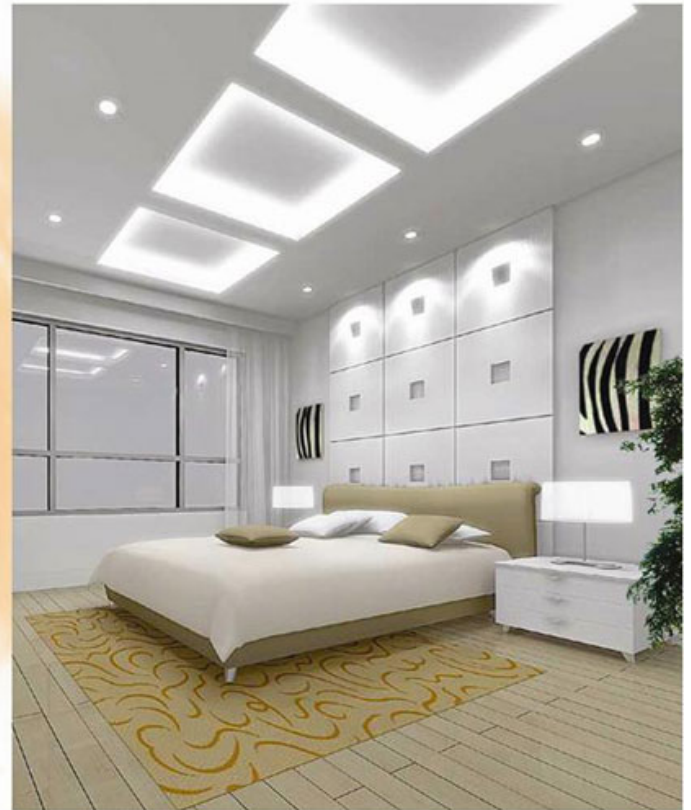
Earthquake resistant RCC Framed structure  
With Fly-ash/Concrete brick wall.

• Flooring

Rooms – Vitrified tiles.  
Kitchen – Polished bull-nosed granite.  
Toilet – Anti skid ceramic tile.  
Common area – Vitrified tile.

• Doors And Window

Main door – Teak wood polished with mortise  
Lock and eye piece.  
Inner doors – Flush doors  
Door frames – Sal or non-sal wood  
Windows – Powder coated aluminum frame  
with sliding typed glass & protected with MS  
grill.  
Toilet – Water proof PVC Door



• Electrical

Modular Electrical Switches.  
TV point in drawing and master bedroom.  
Provision for AC in one bed room (Split).

• Toilets

CP fittings of jaguar/ Marc or equivalent.  
Designer tiles on walls upto 7' ft height.  
Provision for exhaust fan.

• Kitchen

Cooking platform with granite top.  
Stainless steel sink.  
Designer tile upto 3' above the platform.  
Provision for exhaust fan.

• Wall finishes

Internal – Putty with one coat of white  
primer.  
External – Weather coat paint.

## Facilities

24 hour water supply from deep bore well/P.H. supply through over head tank.

Stand by Generator for all common area, Boring point & Lift. Society office.

24 Hr. Securities.

Intercom facilities.

## Payment Schedule

on foundation

on plinth

on completion of 1st roof casting of Stilt floor

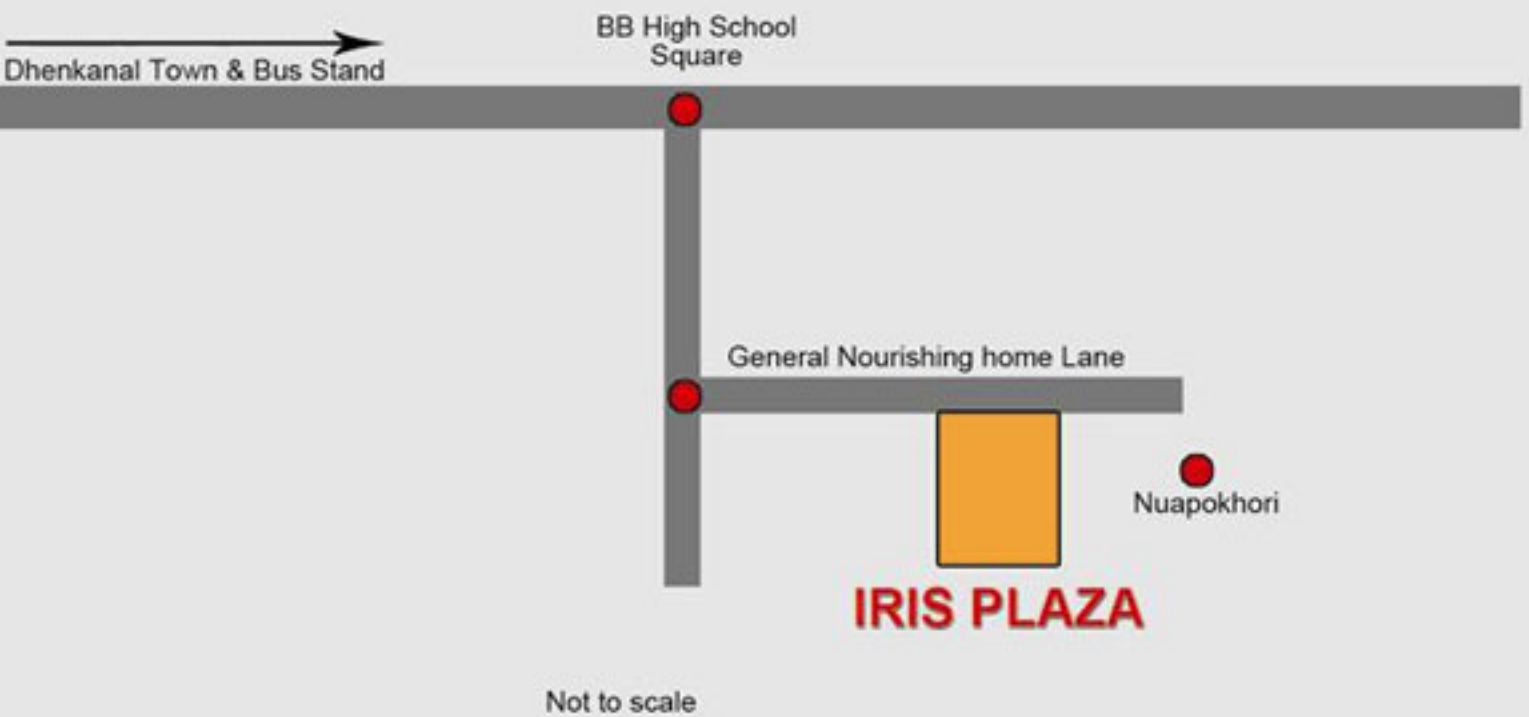
t on completion of first floor roof casting

on completion of Second floor roof casting

t on completion of Third floor roof casting

t on completion of Brick Work of Allotted Flat

on completion of finishing work and handed over & sale deed of the allotted fl



## Distance

id - 0.5 Km., Hospital - 1.5 Km., BB High school - 0.2 km.,  
ege - 1.5 Km., NH-42 - 2 Km., collectorate - 0.5 Km.